

Endless insulation tube - in a practical box and coil



Less loss of material means saving insulation material and glue.

The handles on both sides of the box and coil simplify handling.



Box-Dimension: 50 cm x 50 cm x 30 cm height (20" x 20" x 12" height).
 Coil-Dimension: Ø 60 cm x 40 cm height (20" x 20" x 12" height).

Class 0 kaiflex[®] ST

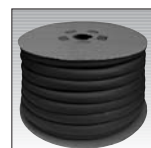
Endless insulation tube in the box



Copper tube		Steel pipe			Wall 6 mm · 1/4"		Wall 9 mm · 3/8"		Wall 13 mm · 1/2"	
Nom. OD inches	Nom. OD mm	I. P.S. inches	Ø exter. mm	Ø nom. mm	Ref. (Wall x OD)	m/box	Ref. (Wall x OD)	m/box	Ref. (Wall x OD)	m/box
1/4	6.35				6 x 06	50	9 x 06	40	13 x 06	26
3/8	9.5	1/8	10.2	6	6 x 10	46	9 x 10	34	13 x 10	23
1/2	12.7		12.5		6 x 12	40	9 x 12	31	13 x 12	18
5/8	15.9	1/4	13.5	8	6 x 15	38	9 x 15	27	13 x 15	17
3/4	19.05				6 x 20	30	9 x 20	23	13 x 20	15
7/8	22.0	1/2	21.3	15	6 x 22	23	9 x 22	19	13 x 22	14
1 1/8	28.6	3/4	26.9	20	6 x 28	20	9 x 28	14	13 x 28	10

Class 0 kaiflex[®] ST

Endless insulation tube of the coil

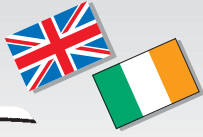


Copper tube		Steel pipe			Wall 9 mm · 3/8"		Wall 13 mm · 1/2"	
Nom. OD inches	Nom. OD mm	I. P.S. inches	Ø exter. mm	Ø nom. mm	Ref. (Wall x OD)	m/coil	Ref. (Wall x OD)	m/coil
1/4	6.35				9 x 06	190	13 x 06	100
3/8	9.5	1/8	10.2	6	9 x 10	140	13 x 10	75
1/2	12.7		12.5		9 x 12	120	13 x 12	65
5/8	15.9	1/4	13.5	8	9 x 15	100	13 x 15	60
3/4	19.05				9 x 20	90	13 x 20	50
7/8	22.0	1/2	21.3	15	9 x 22	85	13 x 22	45
1 1/8	28.6	3/4	26.9	20	9 x 28	75	13 x 28	35



KAIMANN

Competence
and
Partnership



kaiflex[®]
INSULATION SYSTEMS

**CLASS 0 - KAIFLEX ST · THE INSULATION IN THE COOLING SECTOR ON
THE BASIS OF ELASTOMERIC FOAM WITH CLOSED-CELLULAR STRUCTURE**



Class 0
kaiflex[®] **ST**



KAIMANN



Raw material processing installations.



Furnace designed according to the latest aspects for all imaginable flexible possibilities.



Fully developed extruder technology.



Control technology on the basis of the newest electronics.



Production plant from the extrusion stage to the finished product.

Dimensions of cartons (mm):	length	width	height	m ³
Tubes:	2120	405	325	0.279
Sheets as rolls:	560	560	1070	0.340
	410	410	1070	0.180
Sheets (2.0 x 0.5 m):	2010	580	180	0.210

KAIMANN Distributor:

kaiflex[®]
INSULATION SYSTEMS



WILHELM KAIMANN GmbH & Co. KG
D-33161 Hövelhof · Hansastr. 2-5
D-33155 Hövelhof · Postfach 1126
Tel.: +49-5257-9850-0
Fax: +49-5257-9850-590
E-Mail: info@kaimann.de
http://www.kaimann.de



KAIMANN

$\mu \geq 7000$
 $\lambda_{0^\circ} \leq 0.036$
 CFC free

KAIFLEX ST is a very high quality insulation product. Through it's excellent technical properties, more specifically thanks to its very low Thermal Conductivity, it provides a permanently high performance in the field of heat gain or heat loss prevention, $\lambda = 0.036 \text{ W}/(\text{m}\cdot\text{K})$ with 0°C .

Class 0
kaiflex[®] ST

TUBE · size range: length 2 meters · colour:



For tubes: the references marked with a dot are available with Self Adhesive Seal as well. The order number of these tubes are additionally marked with „SK“, e. g. 13 x 22 SK.

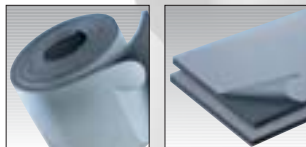
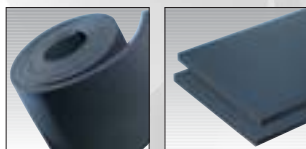
Copper tube		Steel pipe			internal ø mm	Wall 6 mm · 1/4"	
Nom. OD inches	Nom. OD mm	I. P.S. inches	ø external mm	ø nominal mm		Ref. (Wall x OD)	Lengths (2m) per cart.
1/4	6.35				7.0 - 8.5	6 x 06	248
3/8	9.5	1/8	10.2	6	11.0 - 12.5	6 x 10	182
1/2	12.7		12.5		13.0 - 14.5	6 x 12	158
5/8	15.9	1/4	13.5	8	16.0 - 17.5	6 x 15	133
3/4	19.05				19.0 - 20.5	6 x 20	100
7/8	22.0	1/2	21.3	15	23.0 - 24.5	6 x 22	83
1	25.4		25.0		26.0 - 27.5	6 x 25	70
1 1/8	28.6	3/4	26.9	20	29.0 - 30.5	6 x 28	60
1 1/4	32.0				32.5 - 35.0		
1 3/8	34.9	1	33.7	25	36.0 - 38.0		
1 1/2	38.0		38.0		39.0 - 41.0		
1 5/8	41.3	1 1/4	42.4	32	43.5 - 45.5		
1 3/4	44.5		44.5		45.5 - 47.5		
1 7/8	48.0	1 1/2	48.3	40	49.5 - 51.5		
2 1/8	54.0		54.0		55.0 - 57.0		
2 1/4	57.1		57.0		58.0 - 60.0		
2 3/8	60.3	2	60.3	50	61.5 - 63.5		
2 5/8	67.0				67.5 - 70.5		
3	76.2	2 1/2	76.1	65	77.0 - 79.5		
3 1/8	79.4				81.0 - 84.0		
3 1/2	88.9	3	88.9	80	90.5 - 93.5		
4 1/4	108.0		108.0		109.5 - 113.0		
4 1/2	114.3	4	114.3	100	116.0 - 120.0		
4 3/8	127.0		125.0		127.0 - 131.0		
5 1/4			133.0		135.0 - 139.0		
5 1/2	139.7	5	139.7	125	142.0 - 146.0		

Tolerance: Thickness

± 1.5 mm

Class 0
kaiflex[®] ST

Sheets, sheets as rolls



SHEETS					SELF ADHESIVE SHEETS				
Thick-ness mm	Sheets as rolls (1 m width)		Sheets (2.0 x 0.5 m)		Thick-ness mm	Sheets as rolls (1 m width)		Sheets (2.0 x 0.5 m)	
	m ² /carton	Ref.	m ² /carton	Ref.		m ² /carton	Ref.	m ² /carton	Ref.
06	30	PL06-R	24	PL06	06	30	PL06-R-SK	24	PL06-SK
10	20	PL10-R	16	PL10	10	20	PL10-R-SK	16	PL10-SK
13	14	PL13-R	12	PL13	13	14	PL13-R-SK	12	PL13-SK
19	10	PL19-R	8	PL19	19	10	PL19-R-SK	8	PL19-SK
25	8	PL25-R	6	PL25	25	8	PL25-R-SK	6	PL25-SK
32	6	PL32-R	5	PL32	32	6	PL32-R-SK	5	PL32-SK
40			4	PL40	40			4	PL40-SK
50			3	PL50	50			3	PL50-SK

Tolerance:

Thickness 6 – 19 mm ± 1.0 mm · 25–50 mm ± 2.0 mm

KAIFLEX ST a cross linked, closed cell elastomeric foam has a high diffusion resistance factor (μ -value). The diffusion of water vapour in the insulation even over a long period of time will be limited. Thanks to its chemical composition and high percentage of closed cells the longevity of the insulated facility is guaranteed. The combination of low Thermal Conductivity and high Water Vapour Diffusion Resistance make KAIFLEX ST the ideal insulation product for installations working at a temperature below the dew point of the ambient air.

black

Wall 9 mm • 3/8"		Wall 13 mm • 1/2"		Wall 19 mm • 3/4"		Wall 25 mm • 1"		Wall 32 mm • 1 1/4"	
Ref. (Wall x OD)	Lengths (2m) per cart.	Ref. (Wall x OD)	Lengths (2m) per cart.	Ref. (Wall x OD)	Lengths (2m) per cart.	Ref. (Wall x OD)	Lengths (2m) per cart.	Ref. (Wall x OD)	Lengths (2m) per cart.
9 x 06	176	13 x 06	111	19 x 06	53	25 x 06	30		
9 x 10	133	13 x 10	86	19 x 10	49	25 x 10	28		
9 x 12 •	117	13 x 12 •	81	19 x 12 •	44	25 x 12	25		
9 x 15 •	96	13 x 15 •	68	19 x 15 •	39	25 x 15	21		
9 x 20	68	13 x 20	50	19 x 20	32	25 x 20	21		
9 x 22 •	68	13 x 22 •	49	19 x 22 •	32	25 x 22	21	32 x 22	16
9 x 25	54	13 x 25	40	19 x 25	25	25 x 25	20		
9 x 28 •	49	13 x 28 •	39	19 x 28 •	24	25 x 28	20	32 x 28	12
9 x 32	38	13 x 32	30	19 x 32	18	25 x 32	12	32 x 35	11
9 x 35 •	38	13 x 35 •	30	19 x 35 •	18	25 x 35	12		
9 x 38	33								
9 x 42 •	30	13 x 42 •	24	19 x 42 •	16	25 x 42	11	32 x 42	8
9 x 45	28	13 x 45	22	19 x 45	14				
9 x 48 •	25	13 x 48 •	20	19 x 48 •	12	25 x 48	9	32 x 48	7
9 x 54 •	23	13 x 54 •	17	19 x 54 •	12	25 x 54	8	32 x 54	6
9 x 57	21	13 x 57	16	19 x 57	11			32 x 57	6
9 x 60 •	18	13 x 60 •	16	19 x 60 •	9	25 x 60	6	32 x 60	5
9 x 67	15	13 x 67	15	19 x 67	9	25 x 67	6		
		13 x 76 •	11	19 x 76 •	6	25 x 76	5	32 x 76	4
				19 x 80	6				
		13 x 89 •	10	19 x 89 •	6	25 x 89	4	32 x 89	4
		13 x 108	8	19 x 108	5			32 x 108	3
		13 x 114	8	19 x 114	5	25 x 114	3	32 x 114	3
		13 x 125	6	19 x 125	5				
		13 x 133	6	19 x 133	4			32 x 133	2
		13 x 140	6	19 x 140	3	25 x 140	2	32 x 140	2

± 1.5 mm

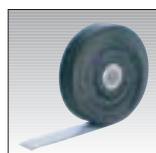
± 2.0 mm

± 2.5 mm

± 2.5 mm

± 3.0 mm

kaiflex® Accessories



INSULATION TAPE

Width	Length	Thick-ness	Rolls/ carton
50 mm	15 m	3 mm	12



KABI - CAN

glue-can + 17 mm brush
11 mm brush
17 mm brush



KNIVES

Complete knife
with 10 spare blades



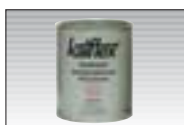
K 414 GLUE

Volume/ can	Cans/ carton
2.200 g	6
660 g	20
450 g	20
220 g (incl. brush)	24



GLUE THINNER

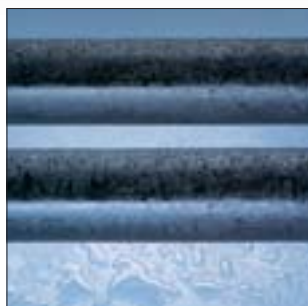
Volume/ can	Cans/ carton
1 lt.	12



KAIFINISH PAINT

Volume/ can	Cans/ carton
0.75 lt.	12

The high standard performance of these products is guaranteed through an external third party supervision by accredited institutes such as F.I.W. Germany; L.N.E. France; SP Sweden; FM USA; P.S.B. Singapore and others, combined with a constant self control of the main quality features.



It is designed for:

- Energy conservation -
- Condensation prevention -
- Frost protection -
- Human protection -

and widely used in the following areas:

- Hot & cold water service -
- Air conditioning ductwork -
- Chilled water piping -
- Refrigeration piping and vessels.

KAIFLEX ST - TECHNICAL DATA

Temperature range Maximum line temperature: Minimum line temperature:	+ 105°C (Flat surfaces and tape + 85°C) - 40°C (- 200°C)			
Thermal Conductivity λ DIN 52612 and DIN 52613:	mean temperature	0°C	+20°C	+40°C
	W/(m•K)	0.036	0.038	0.040
Water vapour permeability Resistance factor DIN 52615:	μ ≥ 7000 (0.09 μgm/NH)			
Fire performance , surface spread of flame, BS476 Part 7 1987:	Class 1			
Fire propagation, BS476 Part 6 1989 Total Index of Performance: Sub index:	Less than 12 Less than 6		Class 0	
Further Certification:	DNV, Lloyd's Register, FM Approval			
Noise reduction:	Acoustic level to 35 dB(A)			
Resistance to building materials:	Very good			
Resistance to chemicals:	Consult product test list			
Water absorption:	after 28 days - max 0.9%			
Limiting Oxygen Index (L.O.I.):	minimum 35%			
Dimensions:	Standard tube 2 m lengths Flat sheet 2 m x 0.5 m Continuous sheet 1 m wide			